



Heathfield  
Harwood

Miller Metcalfe  
*Every step of the way*

# Heathfield

Harwood

Detached  2  1 EPC Rating - D

A wonderfully appointed and beautifully presented detached true bungalow is being welcomed to the market in a fantastic Harwood location!

The bungalow, which sits on a commanding and equally impressive plot with large, well kept gardens plus an abundance of parking has got so much going for it. Internally you'll find a spacious bungalow with a bright and airy finish that you can enjoy from day one. Take advantage of two generous bedrooms, a modern kitchen area which flows into a nice lounge plus a substantial garage.

Heathfield is a quiet and hugely popular residential location in Harwood which is well connected to an abundance of amenities. The local village is walkable where you'll find a supermarket, doctors surgery, plenty of convenience stores and a good selection of places to eat and drink. For those that need to travel, there's strong links to Bolton and Bury either by car or public transport.

The internal accommodation comprises briefly of; entrance porch leading to a warm and welcoming hallway. At the rear of the property you'll find two generous bedrooms and a modern shower room. A door off the hallway leads to a bright and airy lounge which flows nicely into a kitchen area with a combination of base and eye level fitted units.

Basic 3 Mbps  
Superfast 80 Mbps  
Ultrafast 1000 Mbps

MOBILE COVERAGE  
EE  
Vodafone  
Three  
O2

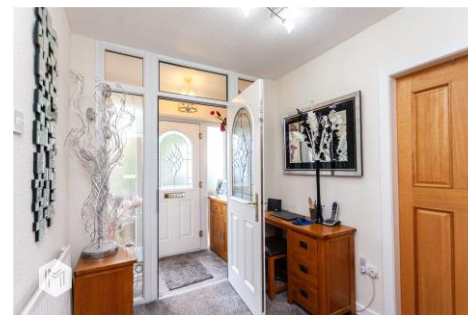
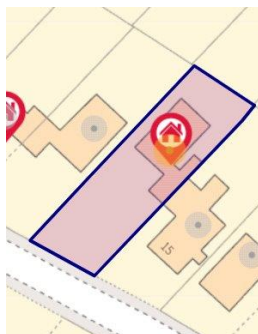
SATELLITE / FIBRE TV AVAILABILITY  
BT  
Sky  
Virgin

TENURE  
Leasehold  
999 years from 1 November 1960

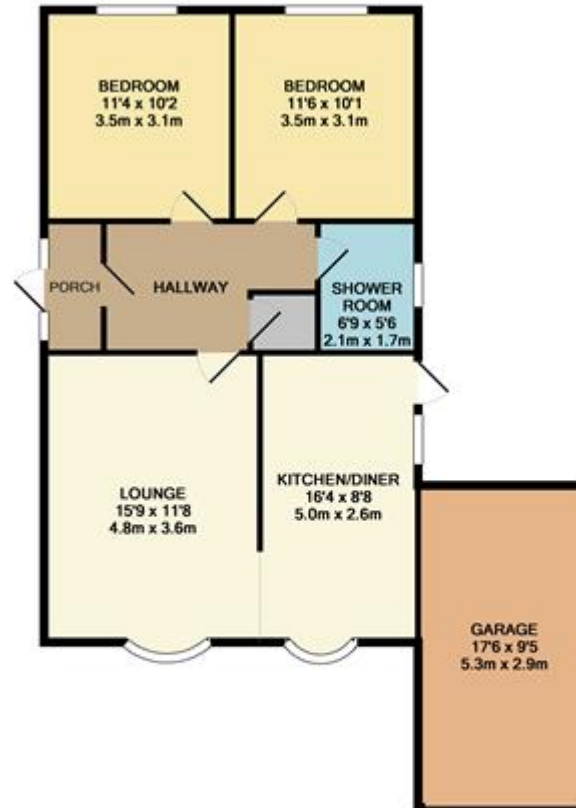
LOCAL AUTHORITY & COUNCIL TAX  
Bolton Council  
Band C  
Annual Price: £1,742

FLOOD RISK  
Very Low

BROADBAND







TOTAL APPROX. FLOOR AREA 869 SQ.FT. (80.7 SQ.M.)

Whilst every attempt has been made to ensure the accuracy of the floor plan contained here, measurements of doors, windows, rooms and any other items are approximate and no responsibility is taken for any error, omission, or mis-statement. This plan is for illustrative purposes only and should be used as such by any prospective purchaser. The services, systems and appliances shown have not been tested and no guarantee as to their operability or efficiency can be given.  
 Made with Metropix ©2019

Every attempt has been made to ensure accuracy, however these property particulars are approximate and for illustrative purposes only. They have been prepared in good faith and they are not intended to constitute part of an offer of contract. We have not carried out a structural survey and the services, appliances and specific fittings have not been tested. All photographs, measurements, floor plans and distances referred to are given as a guide only and should not be relied upon for the purchase of any fixture or fittings. Lease details, service charges and ground rent (where applicable) are given as a guide only and should be checked prior to agreeing a sale.