



Astbury Close

Bury

Miller Metcalfe
Every step of the way

Astbury Close

Bury

Semi Detached



3



1

EPC Rating - C

THREE BEDROOMED DECEPTIVELY SPACIOUS MEWS, FINISHED TO A HIGH STANDARD THROUGHOUT!

This stunning property is situated on a quiet cul-de-sac in a popular location close by to a range of amenities including, schools, shops, country walks, transport links and parks. Internally the well-presented accommodation briefly comprises of entrance hall, WC, lounge, dining room, fully fitted kitchen with fitted appliances. To the first floor there are three bedrooms and the family bathroom with shower over bath.

Externally there is a double driveway to the front and a private garden to the rear perfect for outdoor entertaining, with a paved patio area, lawn space and planted borders. The property also benefits from gas central heating and UPVC double glazing throughout. Viewings are highly recommended to appreciate the accommodation on offer!

TENURE

Leasehold

Lease Term: 999 years from 1 January 2002

Lease Term Remaining: 978 years

Lease End Date: 01 Jan 3001

LOCAL AUTHORITY/COUNCIL TAX

Bury

Band: B

Annual Price: £1,612 approx

SATELLITE / FIBRE TV AVAILABILITY

BT

Sky

BROADBAND

Basic: 8 Mbps

Superfast: 56 Mbps

Ultrafast: 1000 Mbp

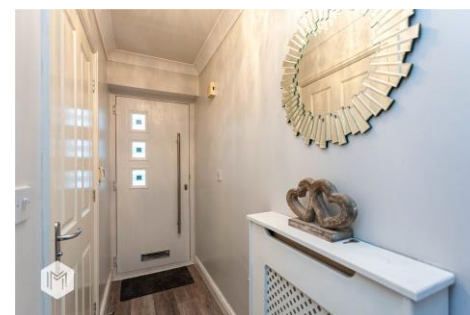
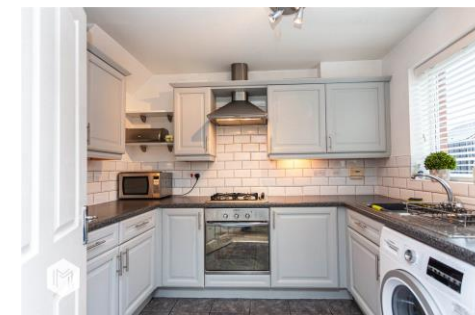
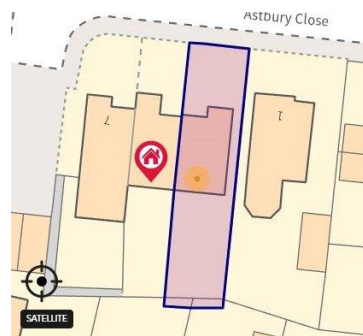
MOBILE COVERAGE

EE - medium

Vodafone - high

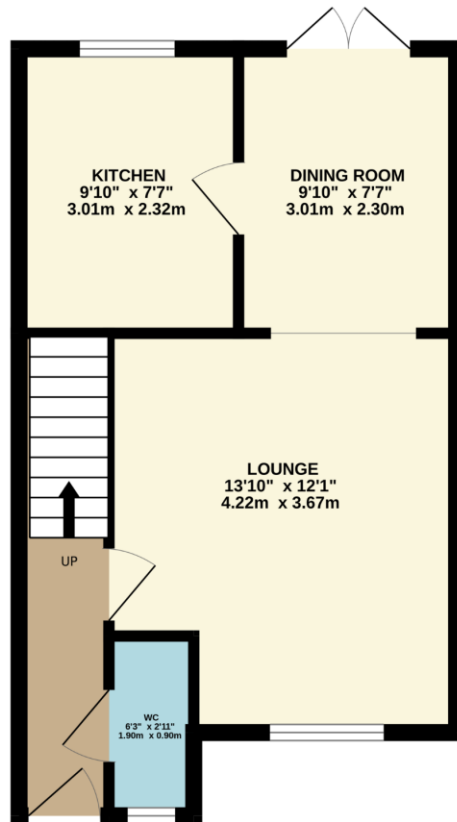
Three - medium

O2 - medium

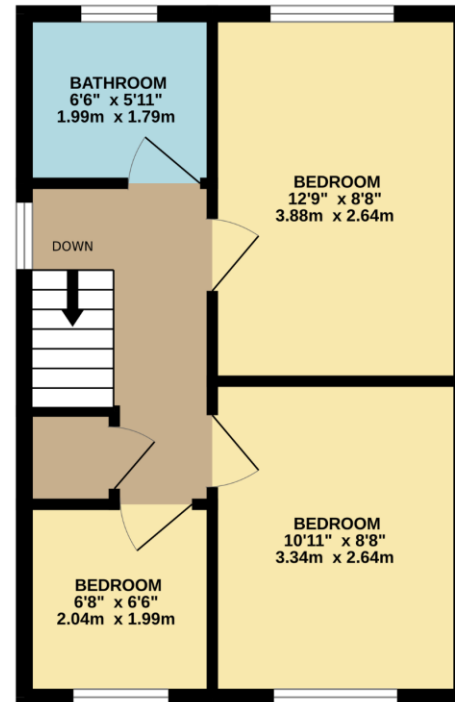




GROUND FLOOR
377 sq.ft. (35.0 sq.m.) approx.



1ST FLOOR
359 sq.ft. (33.4 sq.m.) approx.



TOTAL FLOOR AREA : 736 sq.ft. (68.4 sq.m.) approx.

Whilst every attempt has been made to ensure the accuracy of the floorplan contained here, measurements of doors, windows, rooms and any other items are approximate and no responsibility is taken for any error, omission or mis-statement. This plan is for illustrative purposes only and should be used as such by any prospective purchaser. The services, systems and appliances shown have not been tested and no guarantee as to their operability or efficiency can be given.
Made with Metropix ©2023

Every attempt has been made to ensure accuracy, however these property particulars are approximate and for illustrative purposes only. They have been prepared in good faith and they are not intended to constitute part of an offer of contract. We have not carried out a structural survey and the services, appliances and specific fittings have not been tested. All photographs, measurements, floor plans and distances referred to are given as a guide only and should not be relied upon for the purchase of any fixture or fittings. Lease details, service charges and ground rent (where applicable) are given as a guide only and should be checked prior to agreeing a sale.