



Loxham Street
Bolton

Miller Metcalfe
Every step of the way

Loxham Street

Bolton

Upper Floor  2  1 EPC Rating - C

CALLING ALL INVESTORS**DUPLIX APARTMENT***TWO BEDROOMS***FOR SALE BY MODERN METHOD OF AUCTION*****

Two-bedroom duplex apartment situated on the second floor in this convenient location close to motorway network with the benefit of off road parking in a gated community.

The apartment briefly consists of entrance hallway with large storage cupboard, open plan lounge/fitted kitchen, masted bedroom and three piece family bathroom suite. The second bedroom is located on the upper floor.

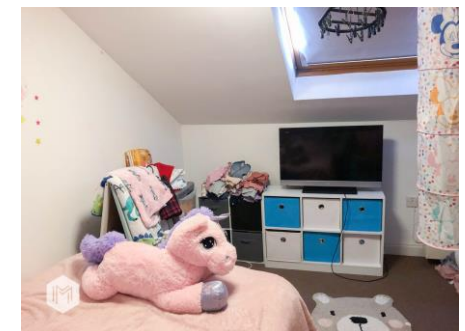
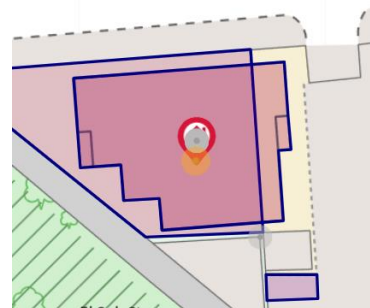
COUNCIL TAX
Band: A
Annual Price: £1,306

FLOOD RISK
Very Low

MOBILE COVERAGE
EE - Average
Vodafone - High
Three - Average
O2 - High

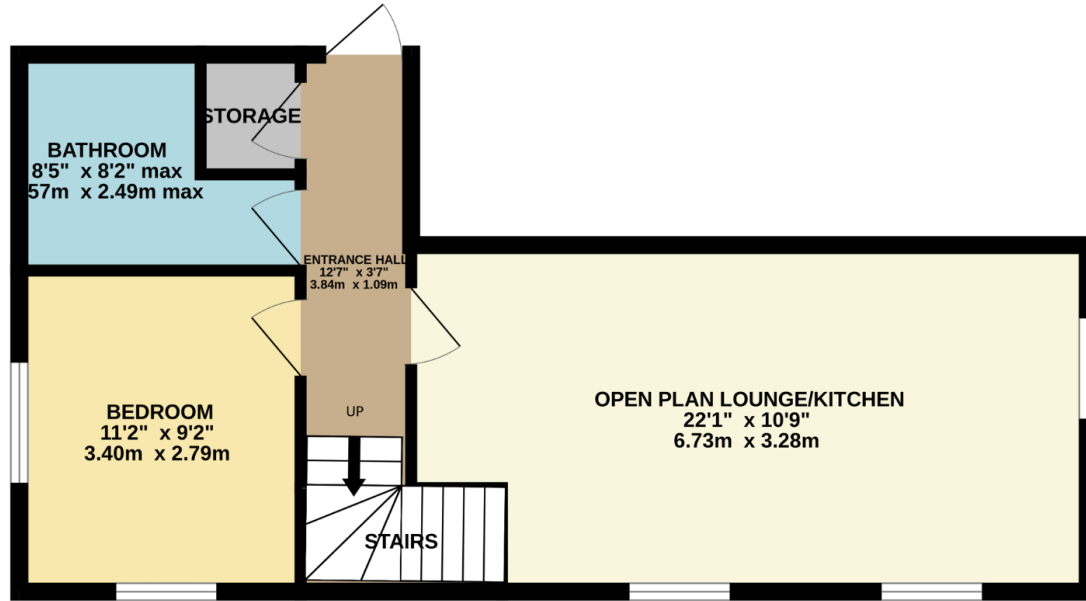
BROADBAND
Basic 16 Mbps
Superfast 75 Mbps

SATELLITE / FIBRE TV AVAILABILITY
BT - Yes
Sky - Yes
Virgin - No

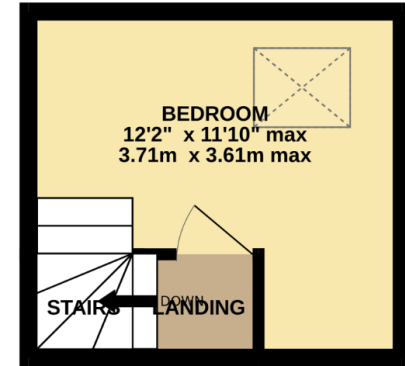




GROUND FLOOR
479 sq.ft. (44.5 sq.m.) approx.



1ST FLOOR
139 sq.ft. (12.9 sq.m.) approx.



TOTAL FLOOR AREA : 618 sq.ft. (57.4 sq.m.) approx.

Whilst every attempt has been made to ensure the accuracy of the floorplan contained here, measurements of doors, windows, rooms and any other items are approximate and no responsibility is taken for any error, omission or mis-statement. This plan is for illustrative purposes only and should be used as such by any prospective purchaser. The services, systems and appliances shown have not been tested and no guarantee as to their operability or efficiency can be given.
Made with Metropix ©2024

Every attempt has been made to ensure accuracy, however these property particulars are approximate and for illustrative purposes only. They have been prepared in good faith and they are not intended to constitute part of an offer of contract. We have not carried out a structural survey and the services, appliances and specific fittings have not been tested. All photographs, measurements, floor plans and distances referred to are given as a guide only and should not be relied upon for the purchase of any fixture or fittings. Lease details, service charges and ground rent (where applicable) are given as a guide only and should be checked prior to agreeing a sale.