



Stranton Drive

Worsley

Miller Metcalfe
Every step of the way

Stranton Drive

Worsley

Semi Detached

3

1

EPC Rating - To be confirmed

*** No Chain Involved - Internal Viewing A Must - Fabulous Extended Bay Fronted Period Semi-Detached Home With a Fabulous Private Rear Garden, Driveway and Garage, 3 Good Sized Bedrooms, 2 Large Reception Rooms, Fitted Dining Kitchen and Situated Within A Much Sought After Cul-de-Sac Setting with Easy Access into Manchester ***

This superb character home offers exceptionally well proportioned and highly versatile accommodation, alongside generous private gardens, driveway and garage providing off road parking. This splendid home offers excellent potential for further extension/development (subject to relevant planning/building consent) and simply must be viewed in person to be fully appreciated.

The generous accommodation comprises an entrance porch, inviting reception hall, spacious bay fronted lounge, a further equally spacious sitting/dining room and a generous fitted dining kitchen to the ground floor. On the first floor a landing, three good sized fitted bedrooms, a two piece bathroom and a separate wc can be found which completes the internal living space.

Outside the property is garden fronted with a driveway and garage providing ample off road parking. The splendid rear garden is private, offering excellent space for relaxing, children's play and al-fresco entertaining.

The quiet cul-de-sac location is highly sought after, providing excellent and varied access via major transport links into to Manchester City Centre, Salford Quays, Media City and across the North West, with a wealth of amenities within close proximity including well regarded primary and secondary schools.

Only by internal inspection with buyers fully appreciate the size, quality and potential of this most impressive home and as such, an early viewing is strongly advised to avoid disappointment.

- TENURE
Leasehold - 999 Year Lease - 914 Years Remaining
Start Date - 08.04.1952 - 24.06.2937

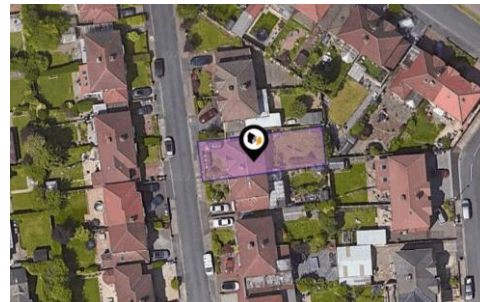
- SATELLITE/FIBRE TV AVAILABILITY
BT - Yes
Sky - Yes
Virgin - Yes

- GROUND RENT/SERVICE CHARGE
To Be Confirmed

- LOCAL AUTHORITY AND COUNCIL TAX
Salford - Band C - £1,871 Per Year

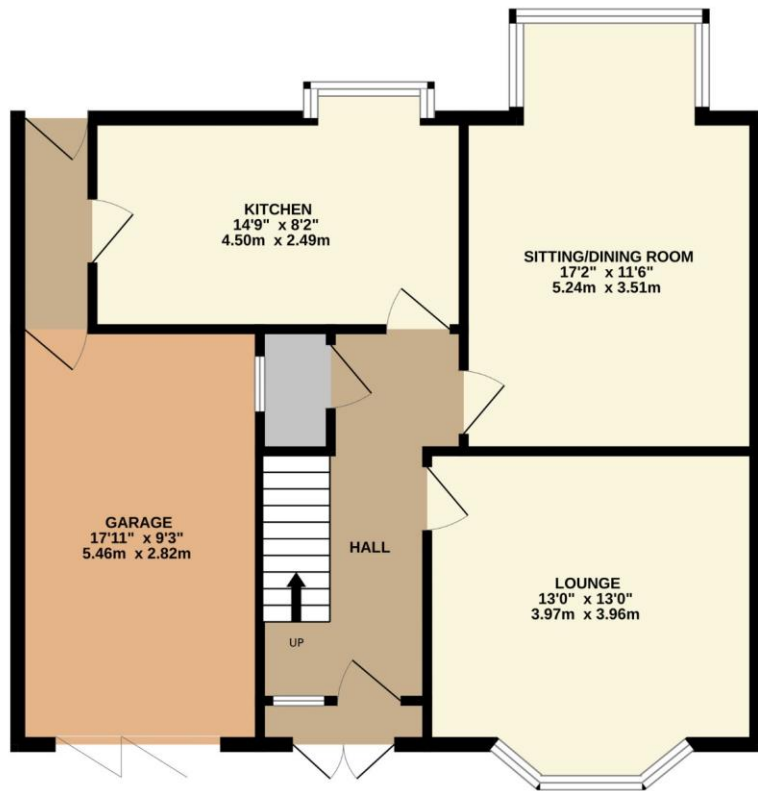
- FLOOD RISK
Very Low

- BROADBAND
Basic - 25 Mbps
Ultrafast - 1,000 Mbps

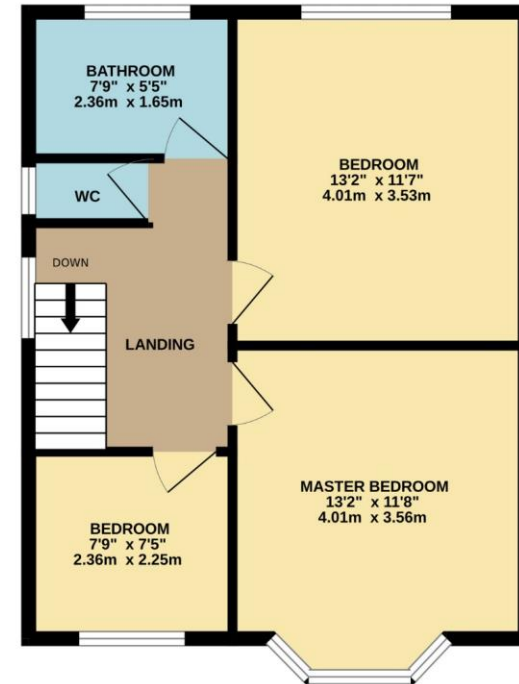




GROUND FLOOR
765 sq.ft. (71.1 sq.m.) approx.



1ST FLOOR
494 sq.ft. (45.9 sq.m.) approx.



TOTAL FLOOR AREA : 1259 sq.ft. (117.0 sq.m.) approx.

Whilst every attempt has been made to ensure the accuracy of the floorplan contained here, measurements of doors, windows, rooms and any other items are approximate and no responsibility is taken for any error, omission or mis-statement. This plan is for illustrative purposes only and should be used as such by any prospective purchaser. The services, systems and appliances shown have not been tested and no guarantee as to their operability or efficiency can be given.
Made with Metropix ©2024

Every attempt has been made to ensure accuracy, however these property particulars are approximate and for illustrative purposes only. They have been prepared in good faith and they are not intended to constitute part of an offer of contract. We have not carried out a structural survey and the services, appliances and specific fittings have not been tested. All photographs, measurements, floor plans and distances referred to are given as a guide only and should not be relied upon for the purchase of any fixture or fittings. Lease details, service charges and ground rent (where applicable) are given as a guide only and should be checked prior to agreeing a sale.