



Bazley Street
Bolton

Miller Metcalfe
Every step of the way

Bazley Street

Bolton

First Floor



2



2

EPC Rating - C

TWO BEDROOMS, DUPLEX APARTMENT, GARAGE, WALKING DISTANCE TO MOSS BANK PARKALLOCATED PARKING*** EN-SUITE RECENTLY REPLACED ***

This beautifully presented first floor two bed apartment offers well-proportioned living space over two floors. This grand building also known as The Village Institute was designed and built in 1846 by Thomas Bazley, the building was originally a former schoolhouse. This first floor apartment is presented in turnkey condition. Stepping over the threshold the lounge offers two feature windows which capture a most pleasant view. Whilst a feature archway leads to the dining area leading through to the stunning modern fitted kitchen.

The first floor has two fantastic sized double bedrooms, and the Master benefits from a beautiful en suite shower room. Warmed by gas central heating and being double glazed the apartment externally has one allocated parking space and a stone built single garage. Overall, a beautiful apartment in this Grade Two listed building which potential buyers will certainly be impressed by.

*No pets allowed.

AGENT NOTES

Service charge is £120.00 per month

TENURE

Tenure
Leasehold
Lease Start Date
24 Mar 1993
Lease End Date
01 Jan 2990
Lease Term
999 years from 1 January 1991
Lease Term Remaining
966 years

COUNCIL TAX

Band: D
Annual Price: £1,960

MOBILE COVERAGE

EE - Medium
Vodafone - Medium
Three - Medium

O2 - Medium

BROADBAND

Basic
21 Mbps
Ultrafast
1000 Mbps

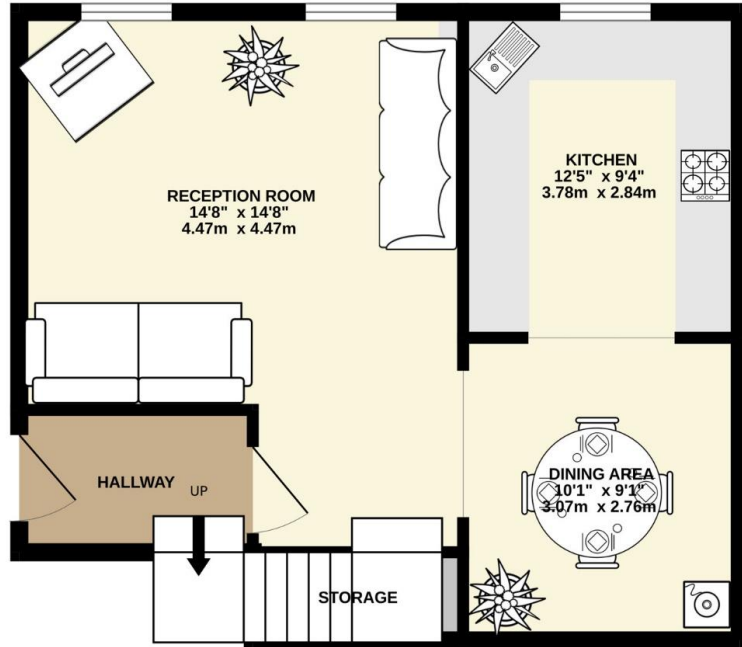
SATELLITE / FIBRE TV AVAILABILITY

BT - Yes
Sky - Yes
Virgin - Yes

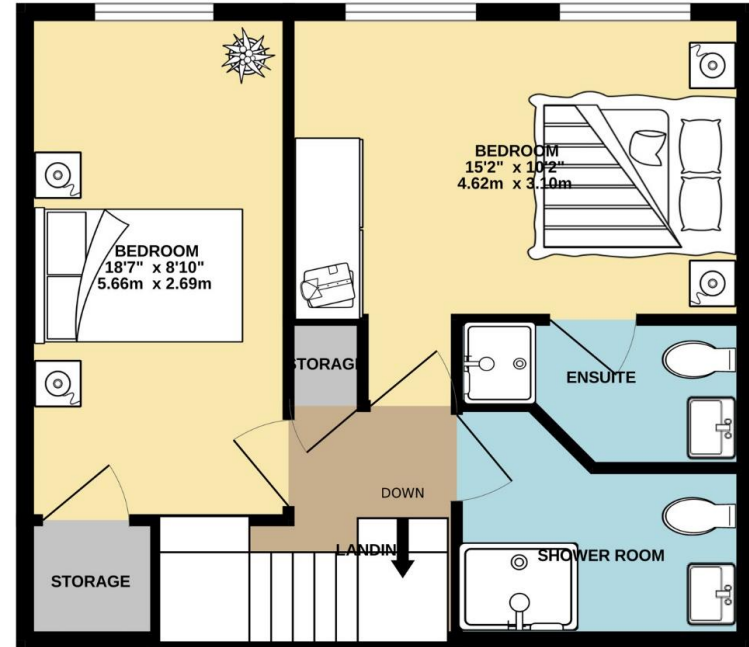




GROUND FLOOR
463 sq.ft. (43.0 sq.m.) approx.



1ST FLOOR
485 sq.ft. (45.1 sq.m.) approx.



TOTAL FLOOR AREA : 948 sq.ft. (88.1 sq.m.) approx.

Whilst every attempt has been made to ensure the accuracy of the floorplan contained here, measurements of doors, windows, rooms and any other items are approximate and no responsibility is taken for any error, omission or mis-statement. This plan is for illustrative purposes only and should be used as such by any prospective purchaser. The services, systems and appliances shown have not been tested and no guarantee as to their operability or efficiency can be given.
Made with Metropix ©2024

Every attempt has been made to ensure accuracy, however these property particulars are approximate and for illustrative purposes only. They have been prepared in good faith and they are not intended to constitute part of an offer of contract. We have not carried out a structural survey and the services, appliances and specific fittings have not been tested. All photographs, measurements, floor plans and distances referred to are given as a guide only and should not be relied upon for the purchase of any fixture or fittings. Lease details, service charges and ground rent (where applicable) are given as a guide only and should be checked prior to agreeing a sale.