



*St. Peters Road*

Bury

**Miller Metcalfe**  
*Every step of the way*

# St. Peters Road

Bury

Semi Detached



3



1

EPC Rating - D

**\*\* FANTASTIC PRE WAR SEMI-DETACHED SITTING ON A COMMANDING AND ENVIUS PLOT WITH EXTENSIVE GARDENS \*\***

Standing proudly in a prime position along tree-lined St Peters Road in Bury sits this wonderfully appointed and beautifully presented three bedroom semi detached home. The property, which sits on a hugely enviable plot benefits from a single garage, off road parking and a spectacular rear garden which is incredibly private and not overlooked, the house has tons of appeal for a growing family to grow into and enjoy for years to come.

Step inside to find a bright, airy and spacious property which flows with neutral and sophisticated decor and has plenty of internal space. Take advantage of two large reception room, a fitted kitchen and separate utility. Furthermore there's two big double bedrooms, a single bedroom and a shower room with a separate WC.

St Peters Road is a quiet, popular and well-regarded spot in Bury. There's an abundance of amenities on the doorstep such as schools, shops, leisure facilities and supermarkets. Bury town centre and The Rock are walkable where you'll find plenty of shopping facilities and plenty of places to eat and drink. For those that need to commute and travel, there's great links to Whitefield and beyond via both road and rail.

The accommodation in brief comprises of; entrance porch leading to a bright, warm and welcoming hallway. A door leads to a reception room with another reception adjacent which are both great for separate living and dining spaces. The hallway provides access to a WC, a fitted kitchen area with a combination of base and eye level units with a utility to the rear. Take the stairs to the first floor and you'll find two bedrooms, a single bedroom, shower room and a separate WC.

#### TENURE

999 years less 10 days from 30 March 1938  
Property Leasehold - Garden Freehold

#### LOCAL AUTHORITY

Bury Council  
Band A  
£2289

#### MOBILE COVERAGE

Vodafone  
Three  
O2

#### BROADBAND

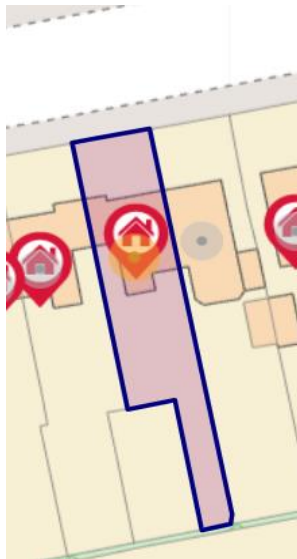
Basic 6 Mbps  
Superfast 187 Mbps  
Ultrafast 1000 Mbps

#### SATELLITE / FIBRE TV AVAILABILITY

BT  
Sky  
Virgin







Every attempt has been made to ensure accuracy, however these property particulars are approximate and for illustrative purposes only. They have been prepared in good faith and they are not intended to constitute part of an offer of contract. We have not carried out a structural survey and the services, appliances and specific fittings have not been tested. All photographs, measurements, floor plans and distances referred to are given as a guide only and should not be relied upon for the purchase of any fixture or fittings. Lease details, service charges and ground rent (where applicable) are given as a guide only and should be checked prior to agreeing a sale.