



Whitland Avenue

Bolton

Miller Metcalfe
Every step of the way

Whitland Avenue

Bolton

Detached



4



2

EPC Rating - D

Set in a pleasant cul-de-sac position on a popular residential estate, this former Redrow modern four-bedroom detached house offers a fantastic environment for growing families, and has to be on any shortlist to view.

The accommodation offers ample living space with four bedrooms, the master boasting en-suite shower room. The property also features a lounge with feature fireplace and living flame gas fire, office, the dining room opens into the garden. A fitted kitchen with range of integrated appliances, this is complemented by a utility room. The ground floor accommodation is completed by an entrance hall with a useful cloakroom/wc. To the first floor the galleried landing is a particular feature. All four bedrooms are double bedrooms and the master and bedroom 2 boasts fitted furniture. There is also a three-piece family bathroom.

Outside the landscaped southwest facing rear garden is a lovely private and enclosed area, ideal for child's play, with gated access to the rear of the property. Off street parking is plentiful, with a double width driveway leading to a fully powered integral double garage.

TENURE
Freehold

COUNCIL TAX
Bolton
Band: F

BROADBAND
Basic: 13 Mbps
Superfast: 32 Mbps
Ultrafast: 1000 Mbps

SATELLITE / FIBRE TV AVAILABILITY
BT
Sky
Virgin

MOBILE COVERAGE
EE - medium
Vodafone - low
Three - medium
O2 - high

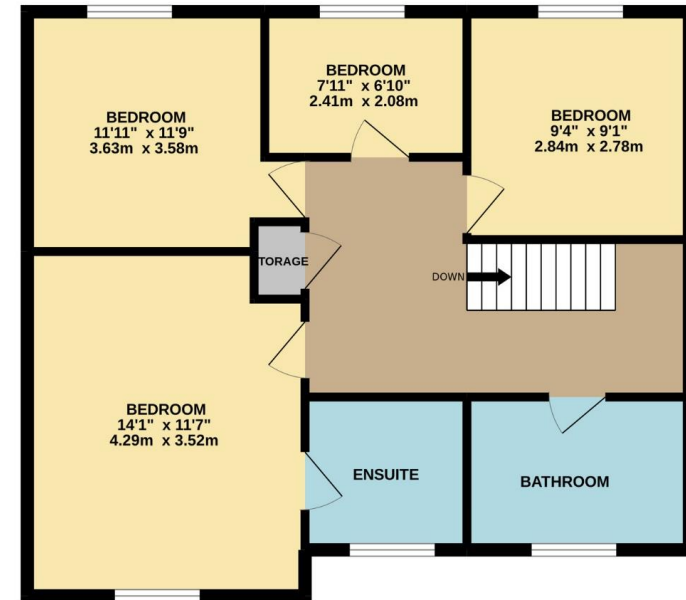




GROUND FLOOR
1039 sq.ft. (96.6 sq.m.) approx.



1ST FLOOR
721 sq.ft. (67.0 sq.m.) approx.



TOTAL FLOOR AREA : 1760 sq.ft. (163.6 sq.m.) approx.

Whilst every attempt has been made to ensure the accuracy of the floorplan contained here, measurements of doors, windows, rooms and any other items are approximate and no responsibility is taken for any error, omission or mis-statement. This plan is for illustrative purposes only and should be used as such by any prospective purchaser. The services, systems and appliances shown have not been tested and no guarantee as to their operability or efficiency can be given.
Made with Metropix ©2022

Every attempt has been made to ensure accuracy, however these property particulars are approximate and for illustrative purposes only. They have been prepared in good faith and they are not intended to constitute part of an offer of contract. We have not carried out a structural survey and the services, appliances and specific fittings have not been tested. All photographs, measurements, floor plans and distances referred to are given as a guide only and should not be relied upon for the purchase of any fixture or fittings. Lease details, service charges and ground rent (where applicable) are given as a guide only and should be checked prior to agreeing a sale.